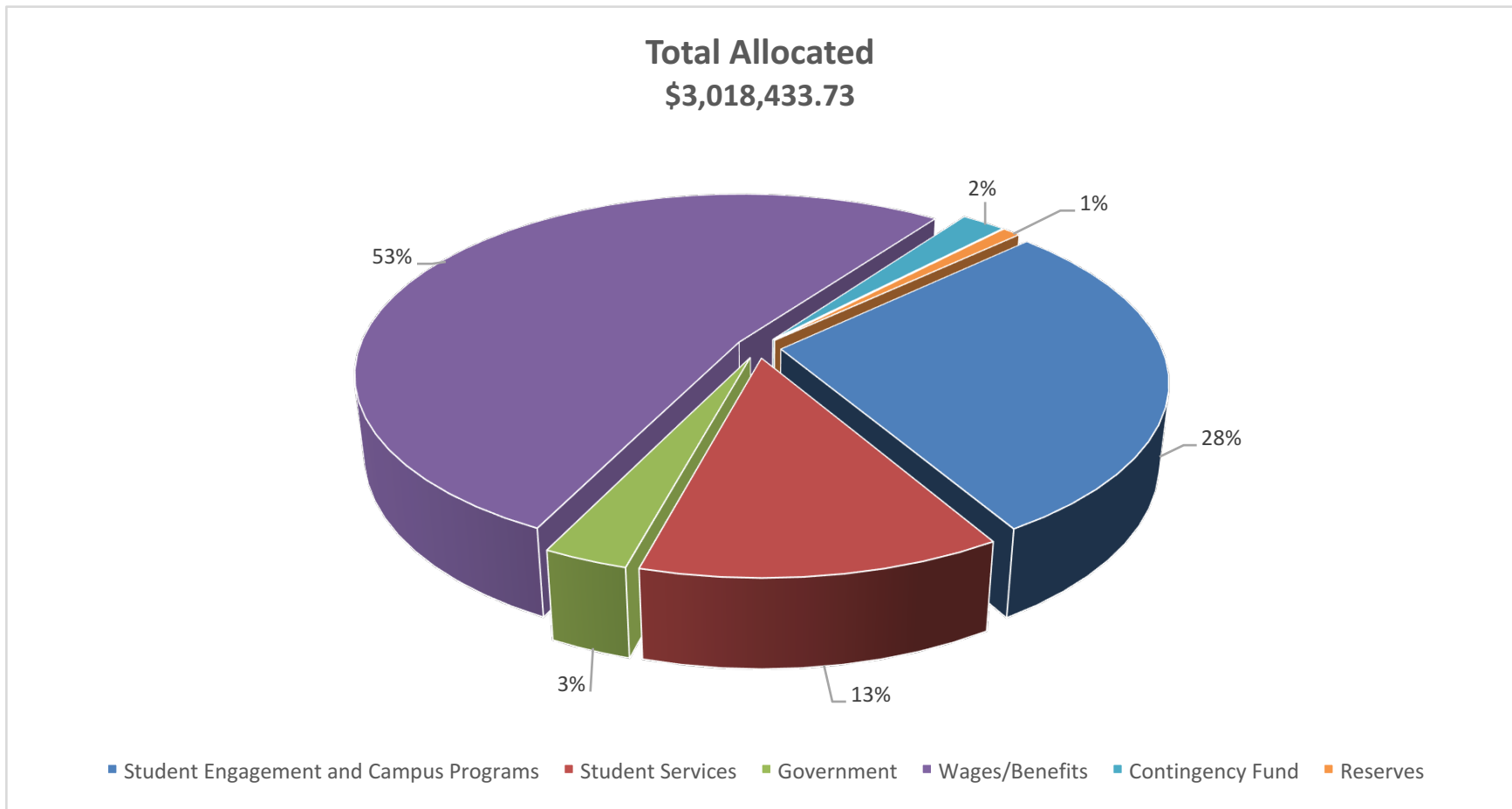
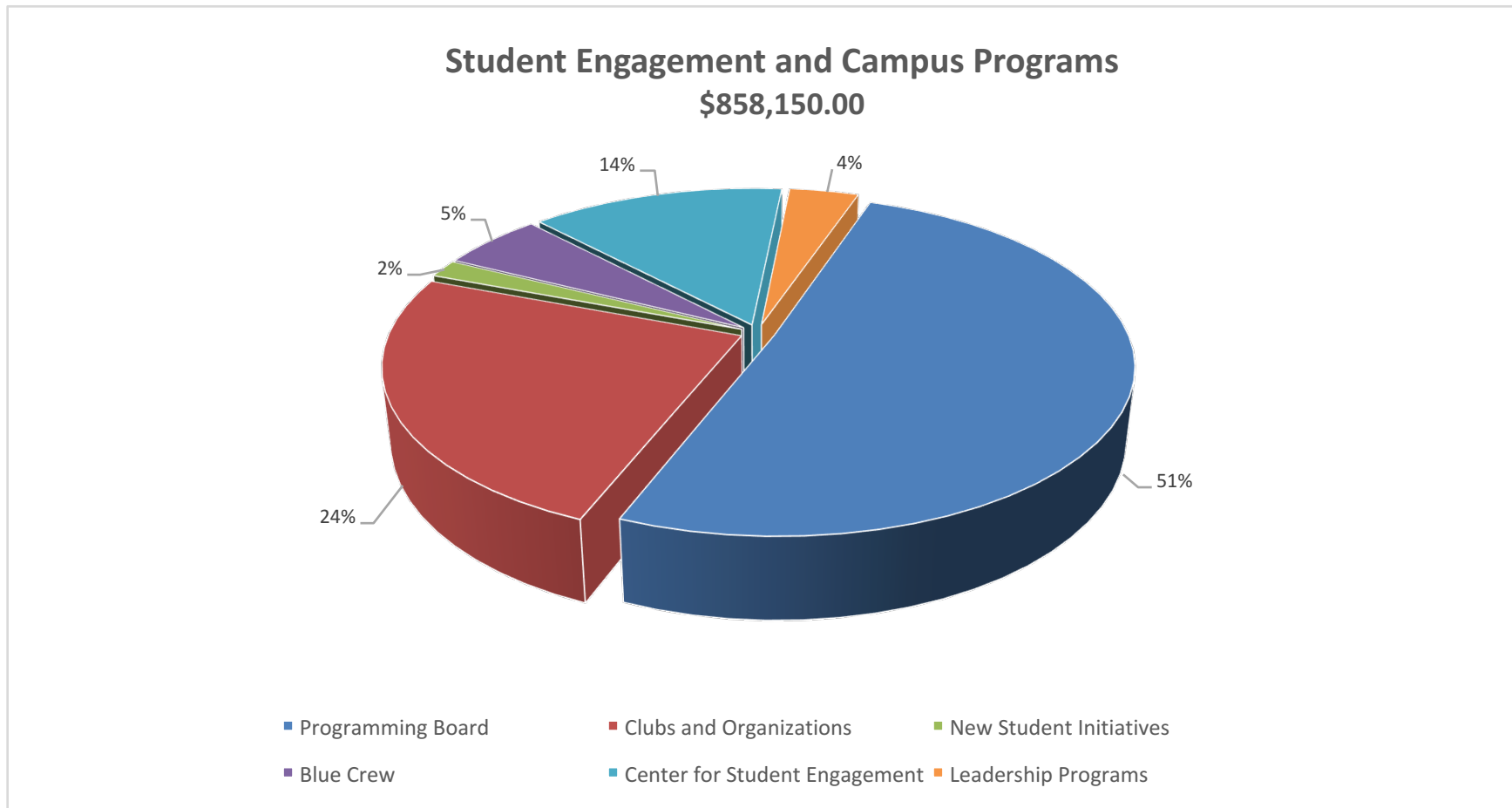


| | | | |
|--|-----------|---------------------|-------------|
| Total Allocated | \$ | 3,018,433.73 | 100% |
| Student Engagement and Campus Programs | \$ | 858,150.00 | 28.43% |
| Student Services | \$ | 385,961.83 | 12.79% |
| Government | \$ | 90,810.00 | 3.01% |
| Wages/Benefits | \$ | 1,590,109.46 | 52.68% |
| Contingency Fund | \$ | 66,250.00 | 2.19% |
| Reserves | \$ | 27,152.44 | 0.90% |



Student Engagement and Campus Programs \$ **858,150.00** **28.43%**

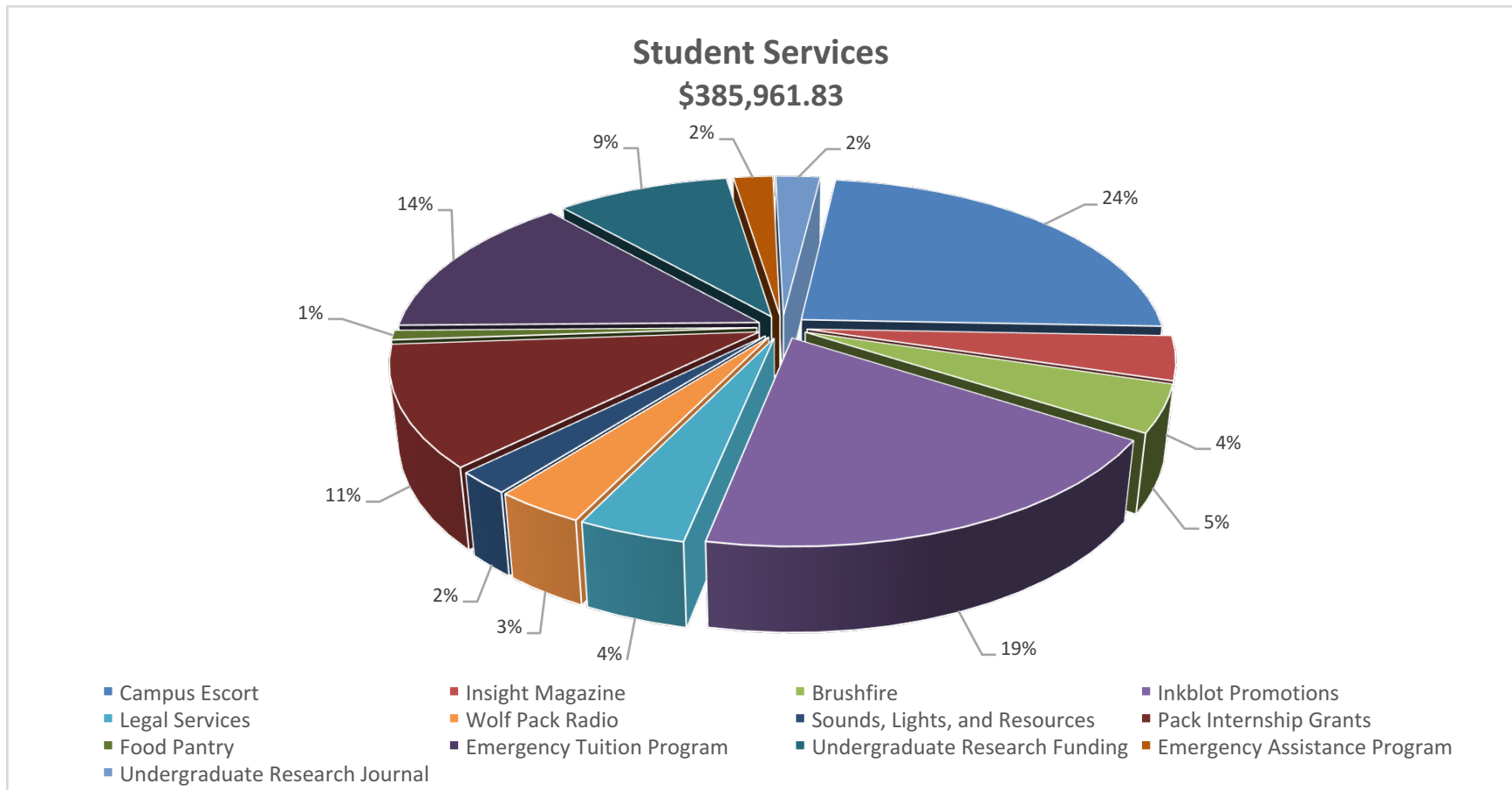
| | | |
|-------------------------------|----|------------|
| Programming Board | \$ | 436,000.00 |
| Clubs and Organizations | \$ | 211,450.00 |
| New Student Initiatives | \$ | 14,500.00 |
| Blue Crew | \$ | 47,000.00 |
| Center for Student Engagement | \$ | 117,200.00 |
| Leadership Programs | \$ | 32,000.00 |



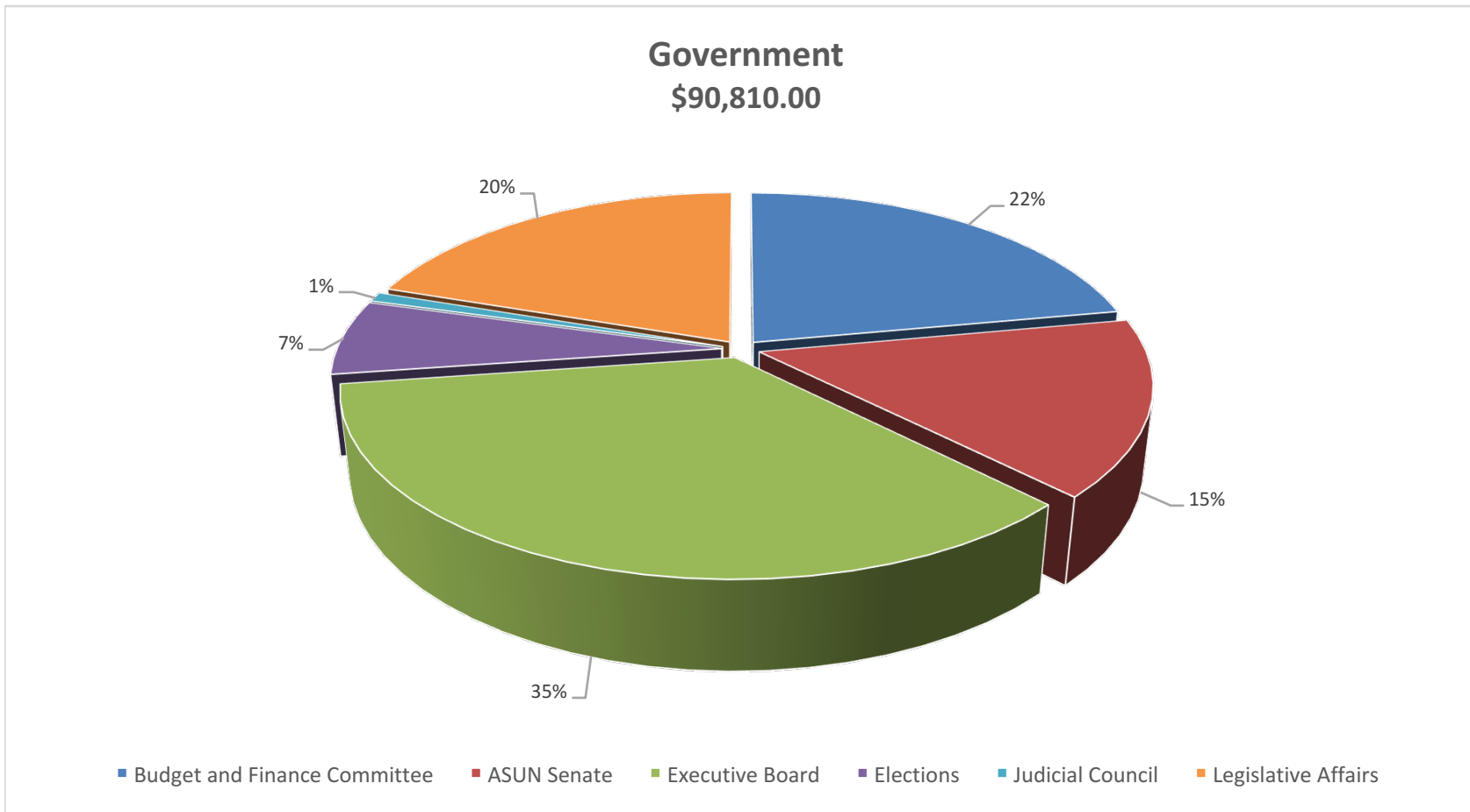
Student Services \$ **385,961.83** **12.79%**

| | | |
|-------------------------------|----|-----------|
| Campus Escort | \$ | 91,399.21 |
| Insight Magazine | \$ | 15,780.00 |
| Brushfire | \$ | 16,885.00 |
| Inkblot Promotions | \$ | 73,800.00 |
| Legal Services | \$ | 15,450.00 |
| Wolf Pack Radio | \$ | 12,890.00 |
| Sounds, Lights, and Resources | \$ | 8,000.00 |

| | | |
|--------------------------------|----|-----------|
| Pack Internship Grants | \$ | 43,360.00 |
| Food Pantry | \$ | 3,417.62 |
| Emergency Tuition Program | \$ | 53,000.00 |
| Undergraduate Research Funding | \$ | 35,000.00 |
| Emergency Assistance Program | \$ | 7,980.00 |
| Undergraduate Research Journal | \$ | 9,000.00 |



| | | | |
|------------------------------|-----------|------------------|--------------|
| Government | \$ | 90,810.00 | 3.01% |
| Budget and Finance Committee | \$ | 20,060.00 | |
| ASUN Senate | \$ | 14,000.00 | |
| Executive Board | \$ | 32,000.00 | |
| Elections | \$ | 6,000.00 | |
| Judicial Council | \$ | 750.00 | |
| Legislative Affairs | \$ | 18,000.00 | |



| | | | |
|-------------------------|-----------|---------------------|---------------|
| Wages/Benefits | \$ | 1,590,109.46 | 52.68% |
| Student | \$ | 756,409.06 | |
| Professional/Classified | \$ | 816,700.40 | |
| Graduate | \$ | 17,000.00 | |

